

## RET M918T

ret proto-oncogene

Recombinant Human Active Protein Kinase

HGNC Symbol: RET

**Synonyms:** CDHF12, CDHR16, HSCR1, MEN2A, MEN2B, MTC1, PTC, RET51, RET-ELE1

**Product No.:** 1099-0000-1

**Lot:** 001

**Description:** Human RET M918T, C-terminal fragment, amino acids H<sub>658</sub>-S<sub>1114</sub> (as in [NCBI/Protein](#) entry NP\_066124.1) with a M918T mutation, N-terminal GST-HIS<sub>6</sub> fusion protein with a 3C cleavage site, expressed in Sf9 insect cells

**Product identity:** RET M918T Lot 001, was confirmed as RET by mass spectroscopy LC-ESI-MS/MS

**Theoretical MW<sub>Fusion Protein</sub>:** 80,406 Da

**Expression host:** Sf9 insect cells/E.coli

**Purification:** GST-Affinity Chromatography

**Activation:** This kinase was not activated by special procedures

**Storage buffer:** 50 mM HEPES pH 7.5, 100 mM NaCl, 5 mM DTT, 15 mM reduced glutathione, 20 % glycerol

**Storage temperature:** -80°C

For complete recovery, mix well and spin before use. Product must not be stored in diluted solutions, aliquots below 10µl are not advisable. Avoid repeated freeze-thaw cycles!

**Protein concentration:** 0.329 µg/µl  
(Bradford method using BSA [Sigma, cat# A-7638, Lot 79H7641] as standard protein)

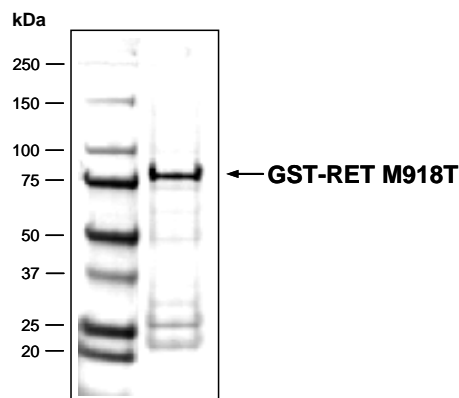
### Biochemical Parameters:

Specific kinase activity (P<sub>i</sub> transfer): 33 pmol/µg × min  
ATP-K<sub>M</sub>: 1.3 µM

### Additional assay technology:

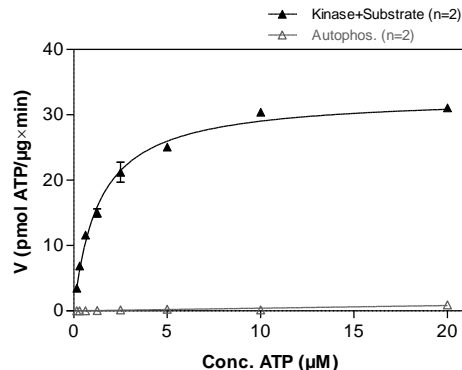
RET M918T Lot 001 was also successfully tested by ProQinase for the use with the ADP-Glo™ Kinase assay from Promega  
ADP-Glo assay conditions may vary from radiometric assay conditions, please inquire for assay details

### RET M918T Lot 001: Coomassie stain



2.0 µg GST-RET M918T

### RET M918T Lot 001: Determination of V<sub>max</sub> and K<sub>M</sub> value for ATP



### Determination of K<sub>M</sub> value & Specific activity:

- Assay conditions:
  - 60 mM HEPES-NaOH, pH 7.5
  - 3 mM MgCl<sub>2</sub>
  - 3 mM MnCl<sub>2</sub>
  - 3 µM Na-orthovanadate
  - 1.2 mM DTT
  - 50 µg/ml PEG<sub>20,000</sub>
  - ATP (variable)
  - Substrate: TRK-C-derived Peptide, 80 µg/ml
  - Kinase: 1 µg/ml
- Filter binding assay  
MSPH membrane (Millipore)

# RET M918T

Product No.: 1099-0000-1

GST-RET M918T Recombinant Fusion Protein Amino Acid Sequence							
1	MSPILGYWKI	KGLVQPTRL	LEYLEEKYEE	HLYERDEGDK	WRNKKFELGL	EFPNLPYYID	60
61	GDKVLTQSM	IIRYIADKHN	MLGGCPKERA	EISMLEGAVL	DIRYGVSRIA	YSKDFETLKV	120
121	DFLSKLPPE	KMFEDRLCHK	TYLNGDHVTH	PDFMLYDALD	VVLYMDPMCL	DAFPKLVCFK	180
181	KRIEAIPIQ	KYLKSSKYIA	WPLQGWQATF	GGGDHPPKSD	PMGHHHHHG	RDSLEVLFCG	240
241	PLAMGARGR	CYHKFAHKPP	ISSAEMTFRR	PAQAFPVSYS	SSGARRPSLD	SMENQVSVDA	300
301	FKILEDPKWE	FPRKNLVLGK	TLGEGEFGKV	VKATAFHLKG	RAGYTTVAVK	MLKENASPSE	360
361	LRDLLSEFNV	LKQVNHPHVI	KLYGACSQDG	PLLLIVEYAK	YGSLRGFLRE	SRKVGPGYLG	420
421	SGGSRNSSSL	DHPDERALTM	GDLISFAWQI	SQGMQYLAEM	KLVHRDLAAR	NILVAEGRKM	480
481	KISDFGLSRD	VYEEDSYVKR	SQGRIPVKWT	AIESLFDHIY	TTQSDVWSFG	VLLWEIVTLG	540
541	GNPYPGIPPE	RLFNLLKTGH	RMERPDNCSE	EMYRLMLQCW	KQEPDKRPVF	ADISKDLEKM	600
600	MVKRRDYLDL	AASTPSDSL	YDDGLSEET	PLVDCNNAPL	PRALPSTWIE	NKLYGMSDPN	660
661	WPGSPVPLT	RADGTNTGFP	RYPNDSVYAN	WMLSPSAAKL	MDTFDS		720

1-218: GST Red: HIS6-tag Green: 3C cleavage site blue: RET fragment boxed: M918T

RET wt <sup>1</sup> Amino Acid Sequence							
1	MAKATSGAAG	LRLLLLLLLP	LLGKVALGLY	FSRDAYWEKL	YVDQAAGTPL	LYVHALRDAP	60
61	EEVPSFRLGQ	HLYGTYRTRL	HENNWICIQE	DTGLLYLNRS	LDHSSWEKLS	VRNRGFPLLT	120
121	VYLKVFLSPT	SLREGECQWP	GCARVYFSFF	NTSFPACSSL	KPRELCFPET	RPSFRIENR	180
181	PPGTFHQFRL	LPVQFLCPNI	SVAYRLLIGE	GLPFRCAPDS	LEVSTRWALD	REQREKYELV	240
241	AVCTVHAGAR	EEVVMVPPFV	TVYDEDDSA	TFPAGVDTAS	AVVEFKRKED	TVVATLRVFD	300
301	ADVVPASGEL	VRRYTSTLLP	GDTWAQQTFR	VEHWPNETSV	QANGSFVRAT	VHDYRLVLNR	360
361	NLSISENRTM	QLAVLVNDS	FQGPAGVLL	LHFNVSVLPV	SLHLPSTYSL	SVSRRARRFA	420
421	QIGKVCVENC	QAFSGINVQY	KLHSSGANCS	TLGVVTS AED	TSGILFVNDT	KALRRPKCAE	480
481	LHYMVVATDQ	QTSRQAQAQL	LVTVEGSYVA	EEAGCPLSCA	VSKRRLECEE	CGGLGSP TGR	540
541	CEWRQGDGKG	ITRNFSTCSP	STKTCPDGHC	DVVETQDINI	CPQDCLRGS	I VGGHEPGEPR	600
600	GIKAGYGTCN	CFPEEEKCFC	EPEDIQDPLC	DEL CRTVIAA	AVLFSFIVSV	LLSAFCIHCY	660
661	HKFAHKPPIS	SAEMTFRRPA	QAFPVSYS	GARRPSLDSM	ENQVSVDAFK	I LEDPKWEFF	720
721	RKNLVLGKTL	GEGEFGKVVK	ATAFHLKGRA	GYTTVAVKML	KENASPSELR	DLLSEFNVLK	780
781	QVNHPHVIKL	YGACSQDGPL	LLIVEYAKYG	SLRGFLRESR	KVGPYLGSG	GSRNSSSLDH	840
841	PDERALTMGD	LISFAWQISQ	GMQYLAEMKL	VHRDLAARNI	LVAEGRKMKI	SDFGLSRDVY	900
901	EEDSYVKRSQ	GRIPVKWMAI	ESLFDHIYTT	QSDVWSFGVL	LWEIVTLGGN	PYPGIPPERL	960
961	FNLLKTGHRM	ERPDCNSEEM	YRLMLQCWKQ	EPDKRPVFAD	ISKDLEKMMV	KRRDYDLAA	1020
1021	STPSDSL IYD	DGLSEETPL	VDCNNAPLPR	ALPSTWIENK	LYGMSDPNWP	GESPVPLTRA	1080
1081	DGTNTGFPRY	PNDSVYANWM	LSPSAAKLMD	TFDS			1140

blue: RET sequence expressed in recombinant protein Red: variant in recombinant protein

<sup>1</sup>[NCBI/Protein](https://www.ncbi.nlm.nih.gov/protein/NP_066124.1) accession number NP\_066124.1

This product was manufactured at ProQinase in Freiburg, Germany, and is for in vitro research use only, not for use in humans or animals. ProQinase disclaims any warranty explicitly or implied that the use of the product or parts of the product is free from third party intellectual property claims unless this is explicitly stated.