

# p38-beta (non activated)

Mitogen-activated protein kinase 11

Recombinant Human non activated Protein Kinase

HGNC Symbol: MAPK11

Synonyms: p38-2, p38b, P38B, p38Beta, P38BETA2, PRKM11, SAPK2, SAPK2B

Product No.: 0455-0000-1

Lot: 005

**Description:** Human p38-beta, full length, amino acids M<sub>1</sub>-Q<sub>364</sub> (as in NCBI/Protein entry NP\_002743.2), non activated, N-terminal HIS<sub>6</sub> fusion protein, expressed in E.coli

**Theoretical MW<sub>Protein</sub>:** 44,693 Da

**Expression:** E. coli

**Activation:** No special measures were taken to activate p38-beta Lot 005

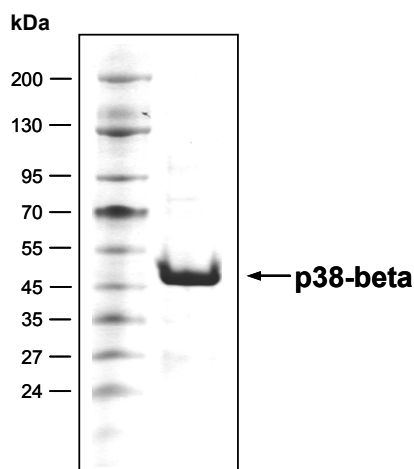
**Purification:** Immobilized Metal Affinity Chromatography

**Storage buffer:** 50 mM HEPES pH 7.5, 100 mM NaCl, 5 mM DTT, 20% glycerol

**Storage temperature:** -80°C  
Avoid repeated freeze-thaw cycles!

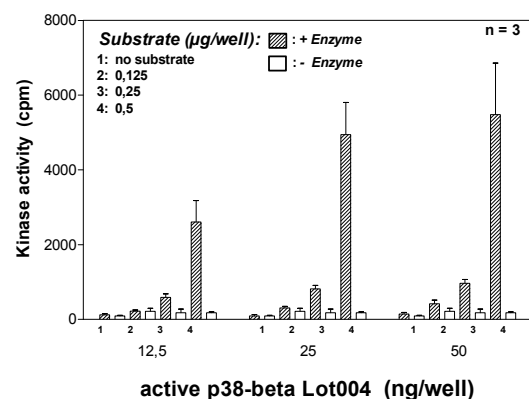
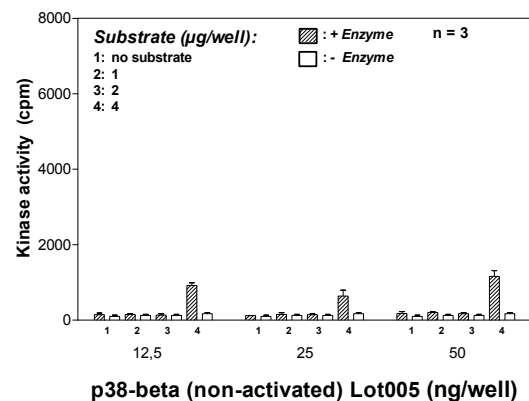
**Protein concentration:** 0.576 µg/µl  
(Bradford method using BSA [Sigma, cat# A-7638, Lot 79H7641] as standard protein)

**p38-beta Lot 005:**  
**Coomassie stain**



4.0 µg p38-beta

## Kinase activity p38-beta (non activated) vs active p38-beta:



### Final assay concentrations:

- 60 mM HEPES-NaOH, pH 7.5
- 3 mM MgCl<sub>2</sub>
- 3 mM MnCl<sub>2</sub>
- 3 µM Na-orthovanadate
- 1.2 mM DTT
- 50 µg / ml PEG<sub>20,000</sub>
- 1 µM ATP (610,000 cpm <sup>33</sup>P-γ-ATP)
- Substrate (variable): ATF2
- Recombinant p38-beta (non activated) or active p38-beta (variable)

Assay: <sup>33</sup>PanQinase® Assay

## p38-beta (non activated)

Product No.: 0455-0000-1

p38-beta Recombinant Fusion Protein Amino Acid Sequence														
1	M	HHHHHH	AMT	ENLYFQ	GAMT	ENLYFQ	GAMS	GPRAGFYR	QE	LNKTVWEV	PQ	RLQGLR	VPVGS	60
61	G	AYGSVCS	AY	DARLRQ	KVAV	KKLSRPF	QSL	IHAR	TYREL	RLKHLKH	EN	VIGLLD	VFTF	120
121	A	TSIEDF	SEV	YLVTTLM	GAD	LNNIVKC	QAL	SDEHVQ	FLVY	QLLRGL	KYIH	SAGI	IHRDLK	180
181	P	SNVAVNE	DC	ELRILD	FGLA	RQADEEM	TGY	VATR	WYRAPE	IMLNWM	HYNQ	TVDI	IWSVGI	240
241	M	AELLQ	GKAL	FPGSDY	IDQL	KRIMEV	VGTP	SPEV	LAKISS	EHARTY	IQSL	PPMP	QKDLSS	300
301	I	FRGAN	PLAI	DLGRML	VLD	SDQRV	SAAEA	LAHAY	FSQYH	DPED	PEAEP	YDES	VEAKE	360
361	T	LEEWK	ELTY	QEVLSF	KPPE	PPKPP	SLEI	EQ						420

Red: HIS6-tag Green: TEV blue: p38-beta

p38-beta wt <sup>1</sup> amino acid sequence														
1	M	SGPRAG	FYR	QELNKT	VWEV	PQRLQGL	RPV	GSGAYG	SVCS	AYDARLR	QKV	AVKKLS	RPFQ	60
61	S	LIHARR	TYR	ELRLLK	HKLK	ENVIGLL	DVF	TPATS	IEDFS	EVYLVTT	LMG	ADLNNI	VKCQ	120
121	A	LSDEHV	QFL	VYQLLR	GLKY	IHSAGI	IHRD	LKPSN	VAVNE	DCELRIL	DFG	LARQAD	EEMT	180
181	G	YVATR	WYRA	PEIMLN	NMWHY	NQTVDI	WVSG	CIMAEL	LQK	ALFPGSD	YID	QLKRIM	EVVG	240
241	T	PSPEV	LAKI	SSEHAR	TYIQ	SLPPMP	QKDL	SSIFR	GANPL	AIDLLGR	MLV	LDSDQR	VSA	300
301	E	ALAHAY	FSQ	YHDPED	EPEA	EPYDES	V	EAK	ERTLEEW	KEL	TYQEVLS	F	KP	360
361	E	IEQ												420

blue: p38-beta sequence expressed in fusionprotein

<sup>1</sup>NCBI/Protein accession number NP\_002743.2

This product is for in vitro research use only, not for use in humans or animals. ProQinase disclaims any warranty explicitly or implied that the use of the product or parts of the product is free from third party intellectual property claims unless this is explicitly stated.