

p38-alpha (non activated)

MAP kinase 14

Recombinant Human Protein Kinase

HGNC Symbol: MAPK14

Synonyms: MAPK14

Product No.: 0639-0000-1

Lot: 006

Description: Human p38-alpha, full length, amino acids M₁-S₃₆₀ (as in NCBI/Protein entry NP_001306.1), N-terminal HIS₆ fusion protein, expressed in E.coli

Product identity: p38-alpha Lot 006, was confirmed as p38-alpha with a p38-alpha specific Western blot

Theoretical MW_{Fusion Protein}: 42,517 Da

Expression: E.coli

Purification: Immobilized Metal Affinity Chromatography

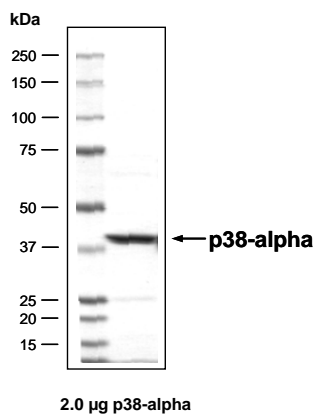
Activation: no activation

Storage buffer: 50 mM HEPES pH 7.5, 100 mM NaCl, 5 mM DTT, 20% glycerol

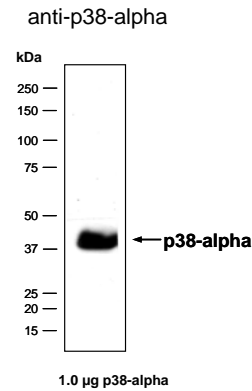
Storage temperature: -80°C
Avoid repeated freeze-thaw cycles!

Protein concentration: 1.300 µg/µl
(Bradford method using BSA [Sigma, cat# A-7638, Lot 79H7641] as standard protein)

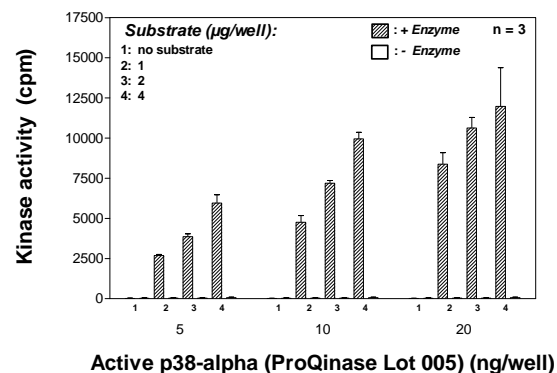
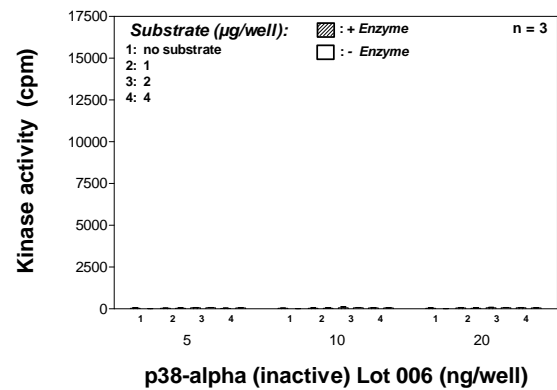
p38-alpha Lot 006: Coomassie stain



p38-alpha Lot 006: Western Blot Analysis



Kinase activity p38-alpha (inactive) vs active p38-alpha:



Final assay concentrations:

- 60 mM HEPES-NaOH, pH 7.5
- 3 mM MgCl₂
- 3 mM MnCl₂
- 3 µM Na-orthovanadate
- 1.2 mM DTT
- 50 µg / ml PEG_{20,000}
- 1 µM ATP (690,000 cpm ³³P-γ-ATP)
- Substrate (variable): ATF2
- Recombinant p38-alpha (inactive) or active p38-alpha (variable)

Assay: ³³PanQinase® Assay

This product is for in vitro research use only, not for use in humans or animals. ProQinase disclaims any warranty explicitly or implied that the use of the product or parts of the product is free from third party intellectual property claims unless this is explicitly stated.

p38-alpha

Product No.: 0639-0000-1

p38-alpha Recombinant Fusion Protein Amino Acid Sequence									
1	M	HHHHHH	AMS	QERPTFYRQE	LNKTIWEVPE	RYQNLSPVGS	GAYGSVCAAF	DTKTGLRVAV	60
61	KKLSRPFQSI	IHAKRTYREL	RLMKHMKHEN	VIGLLDVFTP	ARSLEEFNDV	YLVTHLMGAD		120	
121	LNNIVKCQKL	TDDHVQFLIY	QILRGLKYIH	SADIIHRDLK	PSNLAVNEDC	ELKILDFGLA		180	
181	RHTDDEMTGY	VATRWRAPPE	IMLNWMHYNQ	TVDIWSVSCI	MAELLTGRTL	FPGTDHINQL		240	
241	QQIMRLTGTP	PAYLINRMPS	HEARNYIQSL	TQMPKMNAN	VFIGANPLAV	DLLEKMLVLD		300	
301	SDKRITAAQA	LAHAYFAQYH	DPDDEPVADP	YDQSFESRDL	LIDEWKSLTY	DEVISFVPPP		360	
361	LDQEEMES							420	

1-218: GST Red: HIS6-tag blue: p38-alpha

p38-alpha wt ¹ amino acid sequence							
1	MSQERPTFYR	QELNKTIWEV	PERYQNLSPV	GSGAYGSVCA	AFDTKTGLRV	AVKKLSRPFQ	60
61	SIHAKRTYR	ELRLLKMKH	ENVIGLLDV	TPARSLEEFN	DVYLVTHLMG	ADLNNIVKCQ	120
121	KLTDHVQFL	IYQILRGLKY	IHSADIIHRD	LKPSNLAVNE	DCELKILDFG	LARHTDEMT	180
181	GYVATRWYRA	PEIMLNWMHY	NQTVDIWSVG	CIMAELLTGR	TLFPGTDHIN	QLQQIMRLTG	240
241	TPPAYLINRM	PSHEARNYIQ	SLTQMPKMN	ANVFIGANPL	AVDLLEKMLV	LDSDKRITAA	300
301	QALAHAYFAQ	YHDPDDEPVA	DPYDQSFESR	DLLIDEWKSL	TYDEVISFVP	PPLDQEEMES	360

blue: p38-alpha sequence expressed in fusionprotein

¹NCBI/Protein accession number NP_001306.1