

ProQinase™ EGF-R C797S/L858R

epidermal growth factor receptor

Recombinant Human Active Protein Kinase

HGNC Symbol: EGFR

Synonyms: ERBB, ERBB1

Product No.: 1709-0000-1

Lot: 001

Description: Human EGF-R, C-terminal fragment, amino acids H₆₇₂-A₁₂₁₀ (as in [NCBI/Protein](#) entry NP_005219.2), point mutations C797S and L858R, N-terminal GST-HIS₆ fusion protein with a 3C cleavage site, expressed in Sf9 insect cells

Product identity: EGF-R C797S/L858R Lot 001, was confirmed as EGF-R by mass spectroscopy LC-ESI-MS/MS

Theoretical MW_{Fusion Protein}: 89,197 Da

Expression host: Sf9 insect cells

Purification: GST-Affinity Chromatography

Activation: This kinase was not activated by special procedures

Storage buffer: 50 mM HEPES pH 7.5, 100 mM NaCl, 5 mM DTT, 15 mM reduced glutathione, 20 % glycerol

Storage temperature: -80°C

For complete recovery, mix well and spin before use. Product must not be stored in diluted solutions, aliquots below 10µl are not advisable. Avoid repeated freeze-thaw cycles!

Protein concentration: 1.077 µg/µl
(Bradford method using BSA [Sigma, cat# A-7638, Lot 79H7641] as standard protein)

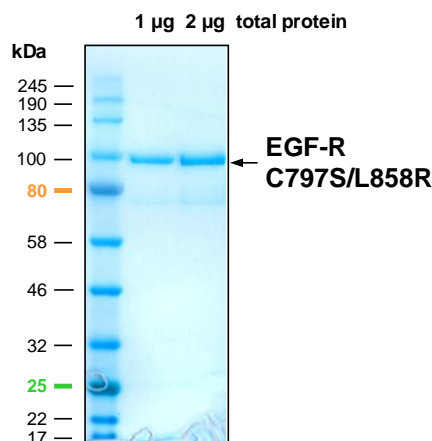
Biochemical Parameters:

Specific kinase activity (P_i transfer): 118 pmol/µg × min
ATP-K_M: 2.7 µM

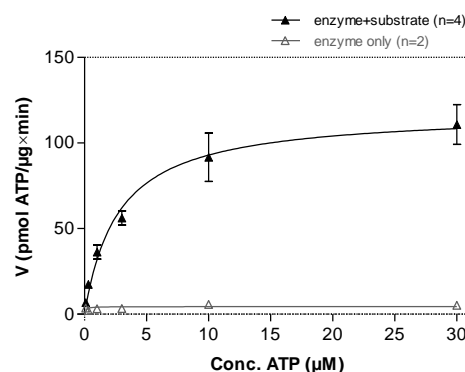
Additional assay technology:

EGF-R C797S/L858R Lot 001 was also successfully tested by Reaction Biology for the use with the ADP-Glo™ Kinase assay from Promega ADP-Glo assay conditions may vary from radiometric assay conditions, please inquire for assay details

EGF-R C797S/L858R Lot 001:
Coomassie stain



EGF-R C797S/L858R Lot 001:
Determination of V_{max} and K_M value for ATP



- Assay conditions:
60 mM HEPES-NaOH, pH 7.5
3 mM MgCl₂
3 mM MnCl₂
3 µM Na-orthovanadate
1.2 mM DTT
50 µg/ml PEG_{20,000}
ATP (variable)
Substrate: Poly(E/Y)_{4:1} 5 µg/ml
Kinase: 1.0 µg/ml
- Filter binding assay
MSFC membrane (Millipore)

ProQinase™ EGF-R C797S/L858R

Product No.: 1709-0000-1

GST-EGF-R C797S/L858R Recombinant Fusion Protein Amino Acid Sequence							
1	MSPILGYWKI	KGLVQPTRL	LEYLEEKYEE	HLYERDEGDK	WRNKKFELGL	EFPNLPYYID	60
61	GDVKLTQSMA	IIRYIADKHN	MLGGCPKERA	EISMLEGAVL	DIRYGVSRIA	YSKDFETLKV	120
121	DFLSKLPPEML	KMFKDRLCHK	TYLNGDHVTH	PDFMLYDALD	VVLYMDPMCL	DAFPKLVCFK	180
181	KRIEAIPOID	KYLKSSKYIA	WPLQGWQATF	GGGDHPPKSD	PMG HHHHHG	RDS LEVLFCG	240
241	PLAMGHIVRK	RTLRLQLQER	ELVEPLTPSG	EAPNQALLRI	LKETEFKKIK	VLGSGAFGTV	300
301	YKGLWIPEGE	KVKIPVAIKE	LREATSPKAN	KEILDEAYVM	ASVDNPHVCR	LLGICLTSTV	360
361	QLITQLMPFG	SLLDYVREHK	DNIGSQYLLN	WCVQIAKGMN	YLEDRLVHR	DLAARNVLVK	420
421	TPQHVKITDF	GRAKLLGAE	KEYHAEGGKV	PIKWMALESI	LHRIYTHQSD	VWSYGVTVWE	480
481	LMTFGSKPYD	GIPASEISSI	LEKGERLPQP	PICTIDVYMI	MVKCWMIDAD	SRPKFRELI	540
541	EFSKMARDPQ	RYLVIQGDER	MHLPSPTDSN	FYRALMDEED	MDDVDADEY	LIPQQGFFSS	600
601	PSTSRTPLLS	SLSATSNNST	VACIDRNLQ	SCPIKEDSFL	QRYSSDPTGA	LTEDSIDDTF	660
661	LPVPEYINQS	VPKRPAGSVQ	NPVYHNQPLN	PAPSRDPHYQ	DPHSTAVGNP	EYLNVTQPTC	720
721	VNSTFDSPA	WAQKGSQIS	LDNPDYQQDF	FPKEAKPNGI	FKGSTAENAE	YLRVAPQSS	780
781	FIGA						840

1-218: GST **Red**: HIS6-tag **Green**: 3C cleavage site **blue**: EGF-R fragment **boxed**: C797S/L858R

EGF-R wt ¹ Amino Acid Sequence							
1	MRPSGTAGAA	LLALLAALCP	ASRALEEKV	COGTSNKLTQ	LGTTFEDHFLS	LQRMFNCEV	60
61	VLGNLEITYV	QRNYDLSFLK	TIQEVAGYVL	IALNTVERIP	LENLQIIRGN	MYYENSYALA	120
121	VLSNYDANKT	GLKELPMRNL	QEILHGAVRF	SNNPALCNVE	SIQWRDIVSS	DFLSNMSMDF	180
181	QNHLGSCQKC	DPSCPNGSCW	GAGEENCQKL	TKIICAQQCS	GRCRGKSPSD	CCHNQCAAGC	240
241	TGPRESCLV	CRKFRDEATC	KDTCPPMLY	NPTTYQMDVN	PEGKYSFGAT	CVKKCPRNVV	300
301	VTDHGSCVRA	CGADSYEMEE	DGVRKCKKCE	GPCRKVCNGI	GIGEFKDSLS	INATNIKHFK	360
361	NCTSISGDLH	ILPVAFRGDS	FTHTPPLDPQ	ELDILKTVKE	ITGFLLIQAW	PENRTDLHAF	420
421	ENLEIIRGRT	KQHGOQFSLAV	VSLNITSLGL	RSKEISDGD	VIISGNKNLC	YANTINWKKL	480
481	FGTSGQTKI	ISNRGENSCK	ATGQVCHALC	SPEGCWGPEP	RDCVSCRNV	RGRECVKCN	540
541	LLEGEPEFV	ENSECIQCHP	ECLPQAMNIT	CTGRGPDNCI	QCAHYIDGPH	CVKTCPAGVM	600
600	GENNTLVWKY	ADAGHVCHLC	HPNCTYGCTG	PGLEGCPDNG	PKIPSIATGM	VGALLLLLVV	660
661	ALGIGLFMR	RHIVRKRTL	RLQERELVE	PLTPSGEAPN	QALLRILKET	EFKKIKVLGS	720
721	GAFGTVYKGL	WIPEGEKVKI	PVAIKELREA	TSPKANKEIL	DEAYVMASVD	NPHVCRLLGI	780
781	CLTSTVQLIT	QLMPFGCLLD	YVREHKDNIG	SOYLLNWCVQ	IAKGMNYLED	RRLVHRDLAA	840
841	RNVLVKTPQH	VKITDFGLAK	LLGAEKEYH	AEGKVPIKW	MALESILHRI	YTHQSDVWSY	900
901	GVTVWELMTF	GSKPYDGIPA	SEISSILEKG	ERLPQPPICT	IDVYMIMVVC	WMIDADSRPK	960
961	FRELIIIEFSK	MARDPQRYLV	IQGDERMHLP	SPTDSNFYRA	LMDEEDMDV	VDADEYLIPQ	1020
1021	QGFFSSPSTS	RTPLSSLSA	TSNNSTVACI	DRNGLQSCPI	KEDSFLQRY	SDPTGALTED	1080
1081	SIDDTFLPVP	EYINQSVPKR	PAGSVQNPVY	HNQPLNPAPS	RDPHYQDPHS	TAVGNPEYLN	1140
1141	TVQPTCVNST	FDSPAHWQK	GSHQISLDNP	DYQDFFPKE	AKPNGIFRGS	TAENAEYLRV	1200
1201	APQSSEFIGA						1260

blue: EGF-R sequence expressed in recombinant protein **Red**: variant in recombinant protein

¹[NCBI/Protein](#) accession number NP_005219.2