

CDK2/CycD1

cyclin dependent kinase 2

Recombinant Human Active Protein Kinase

HGNC Symbol: CDK2

Synonyms: p33

Product No.: 0050-0143-1

Lot: 012

Description: Human CDK2, full length, amino acids M₁-L₂₉₈ (as in [NCBI/Protein](#) entry NP_001789.2) and human CycD1, amino acids Q₄-I₂₉₅ (as in [NCBI/Protein](#) entry NP_444284.1), both N-terminal GST fusion proteins with a Thrombin cleavage site, coexpressed in Sf9 insect cells

Product identity: CDK2/CycD1 Lot 012, was confirmed as CDK2/CycD1 by mass spectroscopy LC-ESI-MS/MS

Theoretical MW_{GST-CDK2}: 60,222 Da

Theoretical MW_{GST-CycD1}: 59,995 Da

Expression host: Sf9 insect cells

Purification: GST-Affinity Chromatography

Activation: This kinase was not activated by special procedures

Storage buffer: 50 mM HEPES pH 7.5, 100 mM NaCl, 5 mM DTT, 15 mM reduced glutathione, 20 % glycerol

Storage temperature: -80°C

For complete recovery, mix well and spin before use. Product must not be stored in diluted solutions, aliquots below 10µl are not advisable. Avoid repeated freeze-thaw cycles!

Protein concentration: 0.491 µg/µl

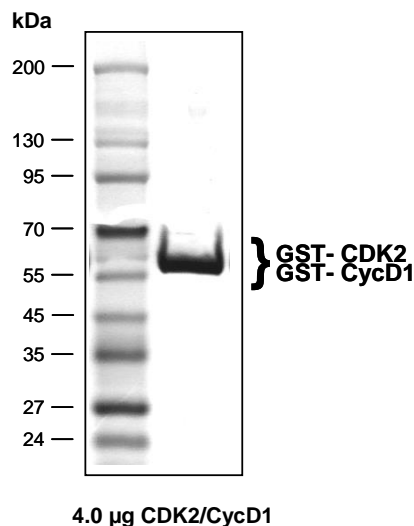
(Bradford method using BSA [Sigma, cat# A-7638, Lot 79H7641] as standard protein)

Biochemical Parameters:

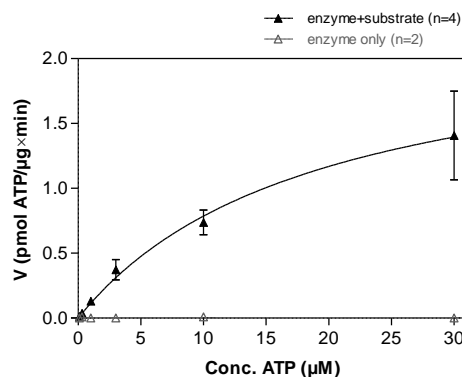
Specific kinase activity (P_i transfer): 2.3 pmol/µg × min

ATP-K_M: 19 µM

CDK2/CycD1 Lot 012: Coomassie stain



CDK2/CycD1 Lot 012: Determination of V_{max} and K_M value for ATP



- Assay conditions:
60 mM HEPES-NaOH, pH 7.5
3 mM MgCl₂
3 mM MnCl₂
3 µM Na-orthovanadate
1.2 mM DTT
50 µg/ml PEG_{20,000}
ATP (variable)
Substrate: RBER-CHKtide 80 µg/ml
Kinase: 2 µg/ml
- Filter binding assay
MSFC membrane (Millipore)

This product was manufactured at ProQinase in Freiburg, Germany, and is for in vitro research use only, not for use in humans or animals. ProQinase disclaims any warranty explicitly or implied that the use of the product or parts of the product is free from third party intellectual property claims unless this is explicitly stated.

CDK2/CycD1

Product No.: 0050-0143-1

GST-CDK2 Recombinant Fusion Protein Amino Acid Sequence							
1	MSPILGYWKI	KGLVQPTRL	LEYLEEKYEE	HLYERDEGDK	WRNKKFELGL	EFPNLPYYID	60
61	GDVKLTQSMA	IIRYIADKHN	MLGGCPKERA	EISMLEGAVL	DIRYGVSRIA	YSKDFETLKV	120
121	DFLSKLPPEML	KMFEDRLCHK	TYLNGDHVTH	PDFMLYDALD	VVLYMDPMCL	DAFPKLVCFK	180
181	KRIEAIPOID	KYLKSSKYIA	WPLQGWQATF	GGGDHPPKSD	LVPRGSMENF	QKVEKIGEGT	240
241	YGVVYKARNK	LTGEVVALKK	IRLDTETEGV	PSTAIRESISL	LKELNHPNIV	KLLDVIHTEN	300
301	KLYLVFEFLH	QDLKKFMDAS	ALTGIPLPLI	KSYLFQLLQG	LAFCHSHRVL	HRDLKPQNLL	360
361	INTEGAIKLA	DFGLARAFGV	PVRTYTHEVV	TLWYRAPEIL	LGCKYYSTAV	DIWSLGCIFA	420
421	EMVTRRALFP	GDSEIDQLFR	IFRTLGTPE	VVWPGVTSMP	DYKPSFPKWA	RQDFSKVVP	480
481	LDEDGRSLLS	QMLHYDPNKR	ISAKAALAH	FFQDVTKPVP	HLRL		540

1-218: GST **Pink**: Thrombin cleavage site **blue**: CDK2 fragment

CDK2 wt ¹ Amino Acid Sequence							
1	MENFQVEKI	GEGTYGVVYK	ARNKLTGEVV	ALKKIRLDTTE	TEGVPSTAIR	EISLLKELNH	60
61	PNIVKLLDVI	HTENKLYLVF	EFLHQDLKKE	MDASALTGIP	LPLIKSYLFQ	LLQGLAFCHS	120
121	HRVLHRDLKP	QNLLINTEGA	IKLADFGLAR	AFGVPVRTYT	HEVVTLWYRA	PEILLGCKYY	180
181	STAVDIWSLG	CIFAEMVTRR	ALFPGDSEID	QLFRIFRTL	TPDEVVWPGV	TSMPDYKPSF	240
241	PKWARQDFSK	VVPLDEDGR	SLLSQMLHYD	PNKRISAKAA	LAHPFFQDVT	KPVPHLRL	300

blue: CDK2 sequence expressed in recombinant protein

¹[NCBI/Protein](#) accession number NP_001789.2

GST-Kinase Recombinant Fusion Protein Amino Acid Sequence							
1	MSPILGYWKI	KGLVQPTRL	LEYLEEKYEE	HLYERDEGDK	WRNKKFELGL	EFPNLPYYID	60
61	GDVKLTQSMA	IIRYIADKHN	MLGGCPKERA	EISMLEGAVL	DIRYGVSRIA	YSKDFETLKV	120
121	DFLSKLPPEML	KMFEDRLCHK	TYLNGDHVTH	PDFMLYDALD	VVLYMDPMCL	DAFPKLVCFK	180
181	KRIEAIPOID	KYLKSSKYIA	WPLQGWQATF	GGGDHPPKSD	LVPRGSAWIQ	LLCCEVETIR	240
241	RAYPDANLNL	DRVLRAMLKA	EETCAPSVSY	FKCVQKEVLP	SMRKIVATWM	LEVCEEQKCE	300
301	EEVFPLAMNY	LDRFLSLEPV	KKSRLQLLGA	TCMFVASKMK	ETIPLTAEKL	CIYTDNSIRP	360
361	EELLQMEILL	VNKLKWNLA	MTPHDFIEHF	LSKMPEAEEN	KQIIRKHAQT	FVALCATDVK	420
421	FISNPPSMVA	AGSVAAVQG	LNLRSNNFL	SYRRLTRFLS	RVIKCDPDCL	RACQEQIEAL	480
481	LESSLRQAQQ	NMDPKAAEEE	EEEEEEVDLA	CTPTDVRDVD	I		540

1-218: GST **Pink**: Thrombin cleavage site **blue**: CycD1 fragment

CycD1 wt ² Amino Acid Sequence							
1	MEHQLLCCEV	ETIRRAYPDA	NLLNDRVLA	MLKAEETCAP	SVSYFKCVQK	EVLPSMRKIV	60
61	ATWMLEVCEE	QKCEEEVFPL	AMNYLDRFLS	LEPVKKSRLQ	LLGATCMFVA	SKMKETIPLT	120
121	AEKLCIYTDN	SIRPEELLQM	ELLLVNKLKW	NLAAMTPHDF	IEHFLSKMPE	AEENKQIIRK	180
181	HAQTFVALCA	TDVKFISNPP	SMVAAGSVVA	AVQGLNLRSP	NNFLSYYRLT	RFLSRVIKCD	240
241	PDCLRACQEQ	IEALLESLR	QAQQNMDPKA	AEEEEEEEEE	VDLACTPTDV	RDVDI	300

blue: CycD1 sequence expressed in recombinant protein

²[NCBI/Protein](#) accession number NP_444284.1

[HGNC](#) identifier CycD1: CCND1

This product was manufactured at ProQinase in Freiburg, Germany, and is for in vitro research use only, not for use in humans or animals. ProQinase disclaims any warranty explicitly or implied that the use of the product or parts of the product is free from third party intellectual property claims unless this is explicitly stated.