

## CCDC6-RET

CCDC6-RET fusion protein variant a

Recombinant Human Active Protein Kinase

HGNC Symbol: n/a

Synonyms: CCDC6-RETA

Product No.: 1417-0000-1

Lot: 003

**Description:** Human CCDC6-RET fusion protein, amino acids Met<sub>1</sub>-Ser<sub>503</sub> (as in [NCBI/Protein](#) entry BAM36435.1), N-terminal GST-HIS<sub>6</sub> fusion protein with a 3C cleavage site, expressed in Sf9 insect cells

**Product identity:** CCDC6-RET Lot 003, was confirmed as a CCDC6-RET by mass spectroscopy LC-ESI-MS/MS

**Theoretical MW<sub>Fusion Protein</sub>:** 84,394 Da

**Expression host:** Sf9 insect cells

**Purification:** GST-Affinity Chromatography

**Activation:** This kinase was not activated by special procedures

**Storage buffer:** 50 mM HEPES pH 7.5, 100 mM NaCl, 5 mM DTT, 15 mM reduced glutathione, 20 % glycerol

**Storage temperature:** -80°C

For complete recovery, mix well and spin before use. Product must not be stored in diluted solutions, aliquots below 10µl are not advisable. Avoid repeated freeze-thaw cycles!

**Protein concentration:** 0.178 µg/µl

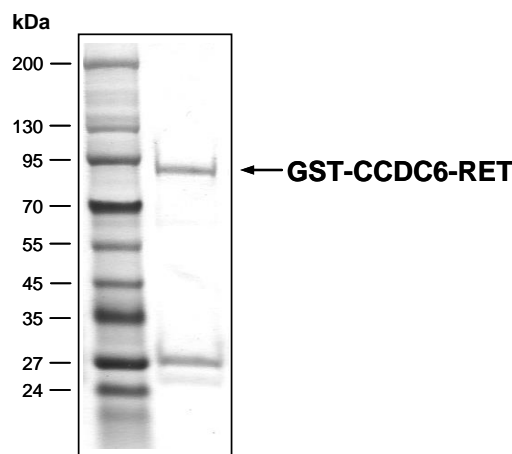
(Bradford method using BSA [Sigma, cat# A-7638, Lot 79H7641] as standard protein)

**Biochemical Parameters:**

Specific kinase activity (P<sub>i</sub> transfer): 127 pmol/µg × min

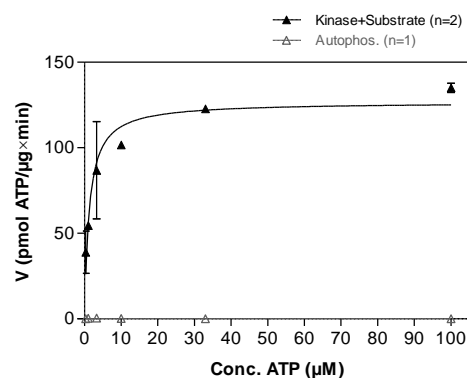
ATP-K<sub>M</sub>: 1.3 µM

**CCDC6-RET Lot 003:**  
Coomassie stain



2.0 µg GST-CCDC6-RET

**CCDC6-RET Lot 003:**  
Determination of V<sub>max</sub> and K<sub>M</sub> value for ATP



- Assay conditions:
  - 60 mM HEPES-NaOH, pH 7.5
  - 3 mM MgCl<sub>2</sub>
  - 3 mM MnCl<sub>2</sub>
  - 3 µM Na-orthovanadate
  - 1.2 mM DTT
  - 50 µg/ml PEG<sub>20,000</sub>
  - ATP (variable)
  - Substrate: TRK-C derived peptide, 40 µg/ml
  - Kinase: 1.0 µg/ml
- Filter binding assay  
MSPH membrane (Millipore)

**Additional assay technology:**

CCDC6-RET Lot 003 was also successfully tested by ProQinase for the use with the ADP-Glo™ Kinase assay from Promega. ADP-Glo assay conditions may vary from radiometric assay conditions, please inquire for assay details

This product was manufactured at ProQinase in Freiburg, Germany, and is for in vitro research use only, not for use in humans or animals. ProQinase disclaims any warranty explicitly or implied that the use of the product or parts of the product is free from third party intellectual property claims unless this is explicitly stated.

## CCDC6-RET

Product No.: 1417-0000-1

GST-CCDC6-RET Recombinant Fusion Protein Amino Acid Sequence							
1	MSPILGYWKI	KGLVQPTRL	LEYLEEKYEE	HLYERDEGDK	WRNKKFELGL	EFPNLPYYID	60
61	GDVKLTQSMA	IIRYIADKHN	MLGGCPKERA	EISMLEGAVL	DIRYGVSRIA	YSKDFETLKV	120
121	DFLSKLPPEML	KMFKDRLCHK	TYLNGDHVTH	PDFMLYDALD	VVLYMDPMCL	DAFPKLVCFK	180
181	KRIEAIPOID	KYLKSSKYIA	WPLQGWQATF	GGGDHPPKSD	PMGHHHHHG	RDSLEVLFGQ	240
241	PLAMGARGRM	ADSASESDT	GAGGNSSSSA	AMQSSCSSTS	GGGGGGGGGG	GGGKSGGIVI	300
301	SPFRLEELTN	RLASLQENK	VLKIELETYK	LKCKALQEEN	RDLRKASVTI	EDPKWEFPRK	360
361	NLVLGKTLGE	GEFGKVVKAT	AFHLKGRAGY	TTVAVKMLKE	NASPSELRLD	LSEFNVLKQV	420
421	NHPHVIKLYG	ACSQDGPLLL	IVEYAKYGS	RGFLRESRKV	GPGYLGSGGS	RNSSSLDHPD	480
481	ERALTMGDLI	SFAWQISQGM	QYLAEMKLVH	RDLAARNILV	AEGRKMKISD	FGLSRDVYEE	540
541	DSYVKRSQGR	IPVKWMAIES	LFDHIYTTQS	DVWSFGVLLW	EIVTLGGNPY	PGIPPERLFN	600
601	LLKTGHRMER	PDNCSEEMYR	LMLQCWKQEP	DKRPVFADIS	KDLEKMMVKR	RDYLDLAAS	660
661	PSDSLIIYDDG	LSEETPLVD	CNNAPLPRAL	PSTWIENKLY	GMSDPNWPGE	SPVPLTRADG	720
721	TNTGFPRYPN	DSVYANWMLS	PSAAKLMDTF	DS			780

1-218: GST **Red**: HIS6-tag **Green**: 3C cleavage site **blue**: CCDC6-RET

CCDC6-RET wt <sup>1</sup> Amino Acid Sequence							
1	MADSASESDT	DGAGGNSSSS	AAMQSSCSST	SGGGGGGGGG	GGGKSGGIV	ISPFRLLEELT	60
61	NRLASLQEN	KVLKIELETY	KLKCKALQEE	NRDLRKASVT	IEDPKWEFPR	KNLVLGKTLG	120
121	EGEFGKVKA	TAFHLKGRAG	YTTVAVKMLK	ENASPSELRD	LLSEFNVLKQ	VNHPHVIKLY	180
181	GACSDGPLL	LIVEYAKYGS	LRGFLRESRK	VGPGYLGSGG	SRNSSLDHP	DERALTMGDL	240
241	ISFAWQISQG	MQYLAEMKLV	HRDLAARNIL	VAEGRKMKIS	DFGLSRDVYE	EDSYVKRSQG	300
301	RIPVKWMAIE	SFDHIYTTQ	SDVWSFGVLL	WEIVTLGGNP	YPGIPPERLF	NLLKTGHRME	360
361	RPDNCSEEMY	RLMLQCWKQE	PDKRPVFADI	SKDLEKMMVK	RRDYLDLAAS	TPSDSLIYDD	420
421	GLSEETPLV	DCNNAPLPR	LPSTWIENKL	YGMSDPNWP	ESPVPLTRAD	GTNTGFPRYP	480
481	NDSVYANWML	SPSAAKLMDT	FDS				540

**blue**: CCDC6-RET sequence expressed in recombinant protein **E<sub>102</sub>**: End of CCDC6 / start of RET ORF

<sup>1</sup>[NCBI/Protein](#) accession number BAM36435.1