

## ALK wt

ALK receptor tyrosine kinase

Recombinant Human Active Protein Kinase

HGNC Symbol: ALK

Synonyms: CD246

Product No.: 1176-0000-1

Lot: 001

**Description:** Human ALK wt, internal fragment, amino acids L<sub>1066</sub>-S<sub>1437</sub> (as in [NCBI/Protein](#) entry NP\_004295.2), N-terminal GST-HIS<sub>6</sub> fusion protein with a 3C cleavage site, expressed in Sf9 insect cells

**Product identity:** ALK wt Lot 001, was confirmed as ALK wt by mass spectroscopy LC-ESI-MS/MS

**Theoretical MW**<sub>Fusion Protein</sub>: 70,459 Da

**Expression host:** Sf9 insect cells

**Purification:** GST-Affinity Chromatography

**Activation:** This kinase was not activated by special procedures

**Storage buffer:** 50 mM HEPES pH 7.5, 100 mM NaCl, 5 mM DTT, 15 mM reduced glutathione, 20 % glycerol

**Storage temperature:** -80°C

For complete recovery, mix well and spin before use. Product must not be stored in diluted solutions, aliquots below 10µl are not advisable. Avoid repeated freeze-thaw cycles!

**Protein concentration:** 0.301 µg/µl

(Bradford method using BSA [Sigma, cat# A-7638, Lot 79H7641] as standard protein)

### Biochemical Parameters:

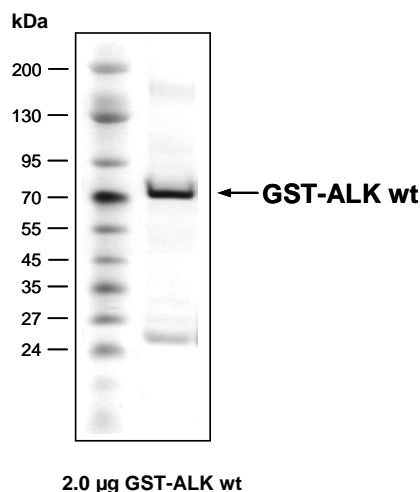
Specific kinase activity (P<sub>i</sub> transfer): 93 pmol/µg × min

ATP-K<sub>M</sub>: 2.5 µM

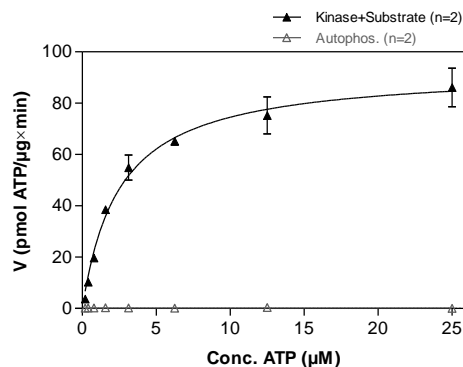
### Additional assay technology:

ALK wt Lot 001 was also successfully tested by ProQinase for the use with the ADP-Glo™ Kinase assay from Promega. ADP-Glo assay conditions may vary from radiometric assay conditions, please inquire for assay details

### ALK wt Lot 001: Coomassie stain



### ALK wt Lot 001: Determination of V<sub>max</sub> and K<sub>M</sub> value for ATP



### Determination of K<sub>M</sub> value & Specific activity:

- Assay conditions:
  - 60 mM HEPES-NaOH, pH 7.5
  - 3 mM MgCl<sub>2</sub>
  - 3 mM MnCl<sub>2</sub>
  - 3 µM Na-orthovanadate
  - 1.2 mM DTT
  - 50 µg/ml PEG<sub>20,000</sub>
  - ATP (variable)
  - Substrate: TRK-C derived peptide 40 µg/ml
  - Kinase: 1 µg/ml
- Filter binding assay
- MSFC membrane (Millipore)

# ALK wt

Product No.: 1176-0000-1

GST-ALK wt Recombinant Fusion Protein Amino Acid Sequence							
1	MSPILGYWKI	KGLVQPTRL	LEYLEEKYEE	HLYERDEGDK	WRNKKFELGL	EFPNLPYYID	60
61	GDVKLTQSMA	IIRYIADKHN	MLGGCPKERA	EISMLEGAVL	DIRYGVSRIA	YSKDFETLKV	120
121	DFLSKLP EML	KMFEDRLCHK	TYLNGDHVTH	PDFMLYDALD	VVLYMDPMCL	DAFPKLVCFK	180
181	KRIEAI PQID	KYLKSSKYIA	WPLQGWQATF	GGGDHPPKSD	PMGHHHHHG	RDSLEVLFCG	240
241	PLAMVLQAMQ	MELQSP EYKL	SKLRTSTIMT	DYNPNYCFAG	KTSSISDLKE	VPRKNITLIR	300
301	GLGHGAFGEV	YEGQVSGMPN	DPSPLQVAVK	TLPEVCSEQD	ELDFLMEALI	ISKFNHQNIV	360
361	RCIGVSLQSL	PRFILLELMA	GGDLKSFLRE	TRPRPSQPS	LAMLDLLHVA	RDIACGCQYL	420
421	EENHFHHRDI	AARNCLLTC	GPRVAKIGD	FGMARDIYRA	SYRKGCCAM	LPVKWMPPEA	480
481	FMEGIFTSKT	DTWSFGVLLW	EIFSLGYMPY	PSKSNQEVLE	FVTSGGRMDP	PKNCPGPVYR	540
541	IMTQCWQHQP	EDRPNFAILL	ERIEYCTQDP	DVINTALPIE	YGPLVEEEEK	VPVRPKDPEG	600
600	VPPLLVSQQA	KREEERS					660

1-218: GST **Red**: HIS6-tag **Green**: 3C cleavage site **blue**: ALK fragment

ALK wt <sup>1</sup> Amino Acid Sequence							
1	MGAIGLLWLL	PLLLSTA AVG	SGMG TGQRAG	SPAAGPPLQP	REPLSYSRLQ	RKSLAVDFV	60
61	PSLFRVYARD	LLLPPSSSEL	KAGRPEARGS	LALDCAPLLR	LLGPAPGVSW	TAGSPAPAEA	120
121	RTLSRVLKG	SVRKLRRAKQ	LVLELGEEAI	LEGCVGPPGE	AAVGLLQFNL	SELSFWWIRQ	180
181	GEGRLRIRLM	PEKKASEVGR	EGRLSAAIRA	SQPRLLFQIF	GTGHSSLESP	TNMPSPSPDY	240
241	FTWNLTWIMK	DSFPFLSHRS	RYGLECSFDF	PCELEYSPL	HDLRNQSWSW	RRIPSEEASQ	300
301	MDLLDGP GAE	RSKEMPRGSF	LLLNTSADSK	HTILSPWMS	SSEHCTLA VS	VHRHLQPSGR	360
361	YIAQLLP HNE	AAREIILLMPT	PGKHGWTVLQ	GRIGRPD NPF	RVALEYISSG	NRSLSAVDF	420
421	ALKNCSEGTS	PGSKMALQSS	FTCWNGTVLQ	LGQACDFHQD	CAQGEDESQM	CRKLPVGFYC	480
481	NFEDGFCGWT	QGTLS PHTPQ	WQVRTLKDAR	FQDHQDHALL	LSTTDVPASE	SATVTSATFP	540
541	APIKSSPCEL	RMSWLIRGVL	RGNVSLV LVE	NKTGKEQGRM	VWHVAAYEGL	SLWQWMV LPL	600
600	LDVSDRFWLQ	MVAWWGQGSR	AIVAFDNISI	SLDCYLTISG	EDKILQNTAP	KSRNLFERNP	660
661	NKELKPGENS	PRQTPIFDPT	VHWFLLTTCGA	SGPHGPTQAQ	CNNAYQNSNL	SVEVGSEGPL	720
721	KGIQIWKVPA	TDTYSISGYG	AAGGKGGKNT	MMRSHGVS VL	GIFNLEKDDM	LYILVGQQGE	780
781	DACPSTNQLI	QKVCIGENNV	I EEEIRVNRS	VHEWAGGGGG	GGGATYVFKM	KDGVVPLII	840
841	AAGGGGRAYG	AKTDTFHPER	LENNSSVLGL	NGNSGAAGGG	GGWNDNTSLL	WAGKSLQEGA	900
901	TGGHSCPQAM	KKWGWETRGG	FGGGGGGCSS	GGGGGGYIGG	NAASNNDPEM	DGEDGVSFIS	960
961	PLGILYTPAL	KVMEGHGEVN	IKHYLNC SHC	EVDECHMDPE	SHKVICFCDH	GTVLAEDGVS	1020
1021	CIVSPTPEPH	LPLSLILSVV	TSALVAALVL	AFSGIMIVYR	RKHQELQAMQ	MELQSP EYKL	1080
1081	SKLRTSTIMT	DYNPNYCFAG	KTSSISDLKE	VPRKNITLIR	GLGHGAFGEV	YEGQVSGMPN	1140
1141	DPSPLQVAVK	TLPEVCSEQD	ELDFLMEALI	ISKFNHQNIV	RCIGVSLQSL	PRFILLELMA	1200
1201	GGDLKSFLRE	TRPRPSQPS	LAML DLLHVA	RDIACGCQYL	EENHFHHRDI	AARNCLLTC	1260
1261	GPRVAKIGD	FGMARDIYRA	SYRKGCCAM	LPVKWMPPEA	FMEGIFTSKT	DTWSFGVLLW	1320
1321	EIFSLGYMPY	PSKSNQEVLE	FVTSGGRMDP	PKNCPGPVYR	IMTQCWQHQP	EDRPNFAILL	1380
1381	ERIEYCTQDP	DVINTALPIE	YGPLVEEEEK	VPVRPKDPEG	VPPLLVSQQA	KREEERS	1440
1441	PPPLPTTSSG	KAACKPTAAE	ISVRVPRGPA	VEGGHV NMAF	SQSNPPSELH	KVHGSRNKPT	1500
1501	SLWNPTYGSW	FTEKPTKKN	PIAKKEPHDR	GNLGLGESC T	VPPNVATGRL	PGASLLLEPS	1560
1561	SLTANMKEVP	LFRLRHFP CG	NVNYGYQQQG	LPLEAATAPG	AGHYEDTILK	SKNSMNQPGP	1620

**blue**: ALK sequence expressed in recombinant protein

<sup>1</sup>[NCBI/Protein](#) accession number NP\_004295.2