

human RET kinase (GenBank Acc.No: NM_000323)



ProQinase RET (His₆₅₈-Asp₁₁₁₀)

743 aminoacids, 84.322 kDa

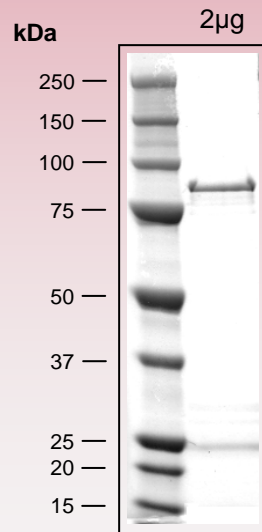
1-218 GST

224-229 HIS-tag

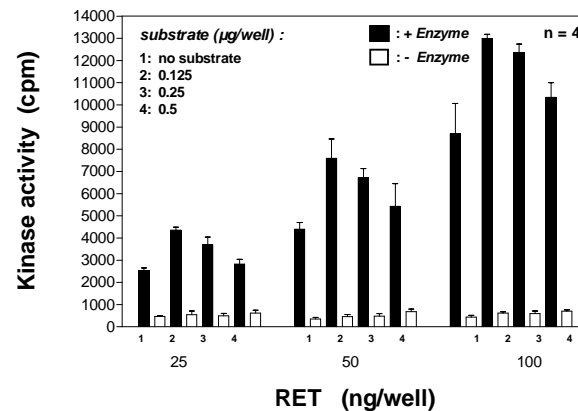
241-246 Thrombin cleavage site

280-732 RET 658-1110

Representative lot: Coomassie stain & activity in PanQinase™ assay



RET kinase activity using different substrate and enzyme concentrations



Lot specific datasheet available on request.
please contact:
info@proqinase.com