

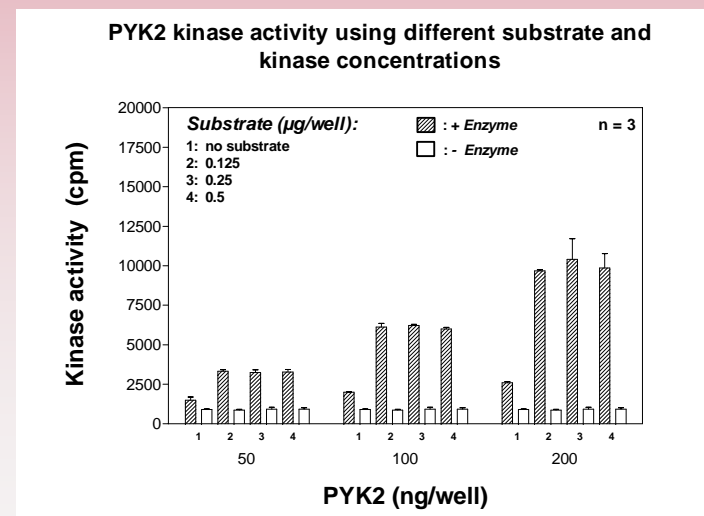
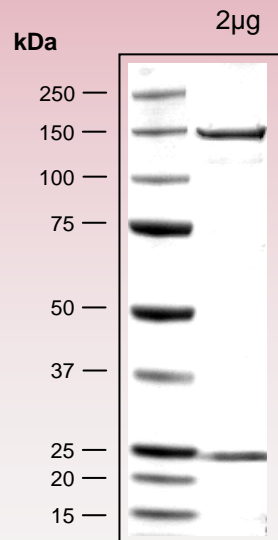
human **PYK2** kinase (GenBank Acc.No: NM_004103.3)



1269 aminoacids, 145.724 kDa

- 1-218 GST
- 224-229 HIS-tag
- 241-246 Thrombin cleavage site
- 261-1269 PYK2 1-1009

Representative lot: Coomassie stain & activity in PanQinase™ assay



Lot specific datasheet available on request.
please contact:
info@proqinase.com