

human PIM2 kinase (GenBank Acc.No: XM_010208)



ProQinase PIM2 (Met₁-Pro₃₁₁)

570 aminoacids, 64.096 kDa

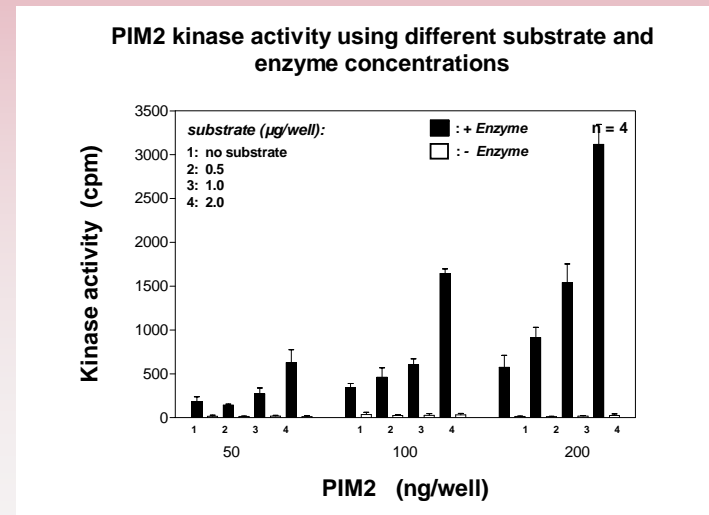
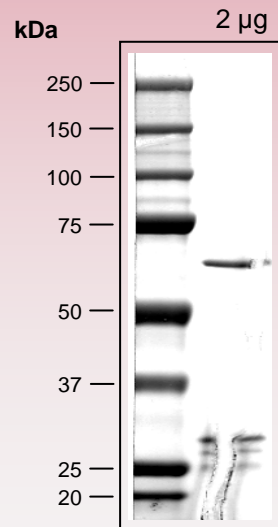
1-218 GST

224-229 HIS-tag

241-246 Thrombin cleavage site

260-570 PIM2 1-311

Representative lot: Coomassie stain & activity in PanQinase™ assay



Lot specific datasheet available on request.
please contact:
info@proqinase.com