

human PIM1 kinase (GenBank Acc.No: NM_002648)



ProQinase PIM1 (Met₁-Lys₃₁₃)

571 aminoacids, 65.423 kDa

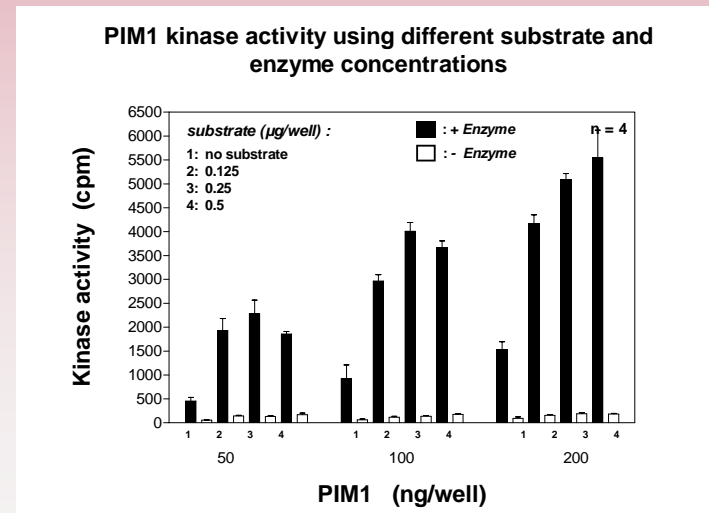
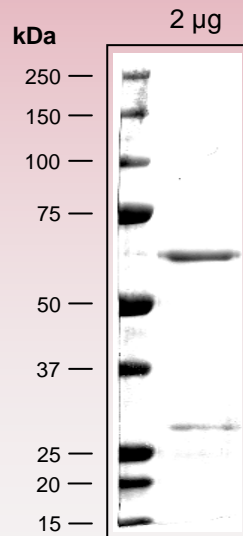
1-218 GST

224-229 HIS-tag

241-246 Thrombin cleavage site

259-571 PIM1 1-313

Representative lot: Coomassie stain & activity in PanQinase™ assay



Lot specific datasheet
available on request.
please contact:
info@proqinase.com