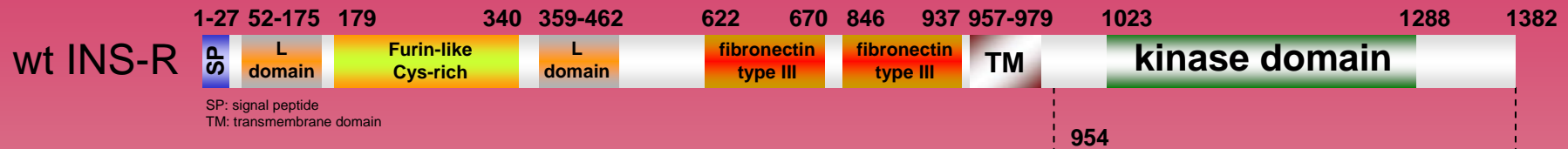


# human **INS-R** kinase (GenBank Acc.No: NM\_000208)

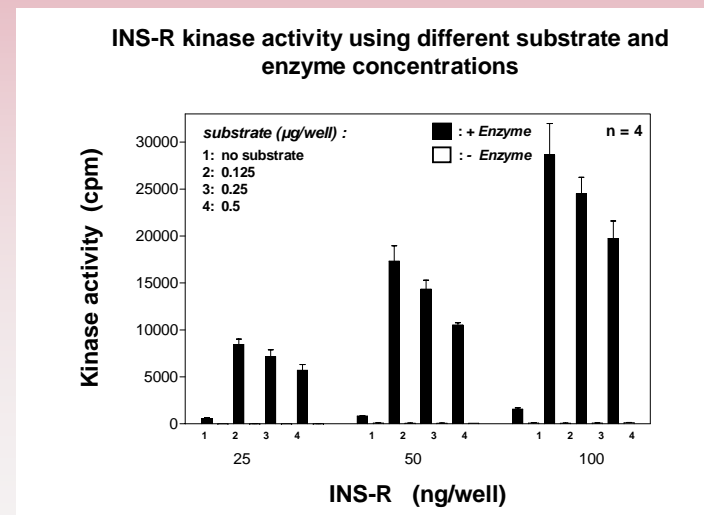
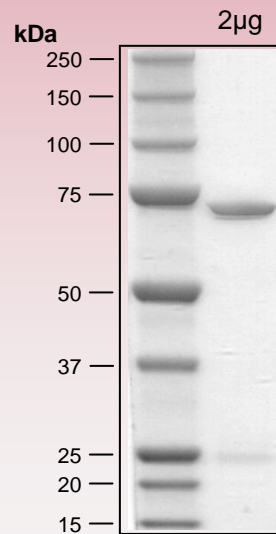


## ProQinase INS-R (Gly<sub>989</sub>-Ser<sub>1382</sub>)

616 aminoacids, 70.392 kDa  
1-218 GST  
222-616 INS-R 954-1367



### Representative lot: Coomassie stain & activity in PanQinase™ assay



Lot specific datasheet  
available on request.  
please contact:  
[info@proqinase.com](mailto:info@proqinase.com)