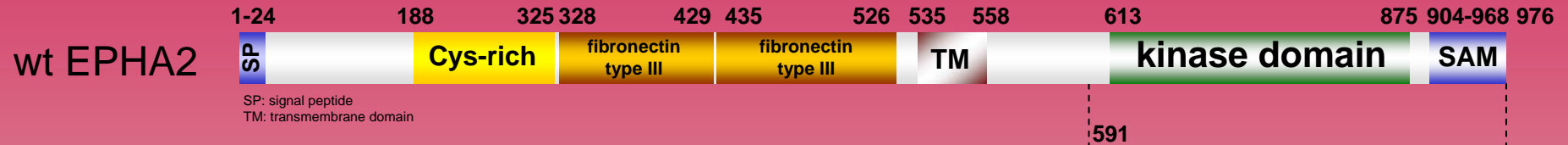


# human EPHA2 kinase (GenBank Acc.No: NM\_004431.2)



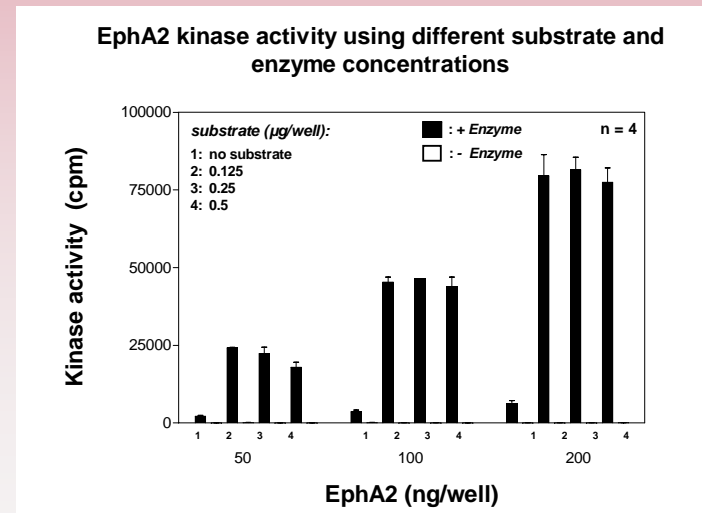
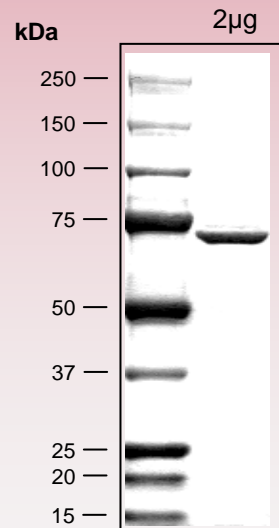
## ProQinase EPHA2 (Pro<sub>591</sub>-Ile<sub>976</sub>)

647 aminoacids, 73.691 kDa

1-218 GST  
224-229 HIS-tag  
241-246 Thrombin cleavage site  
262-647 EPHA2 591-976



## Representative lot: Coomassie stain & activity in PanQinase™ assay



Lot specific datasheet available on request.  
please contact:  
[info@proqinase.com](mailto:info@proqinase.com)