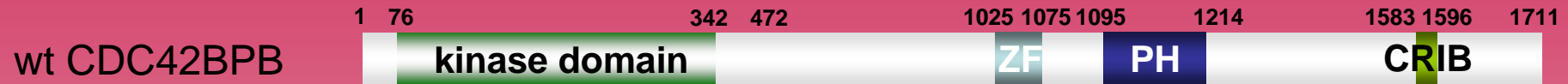


human CDC42BPB kinase (GenBank Acc.No: NM_006035)



ProQinase CDC42BPB (Met₁-Gln₄₇₃)

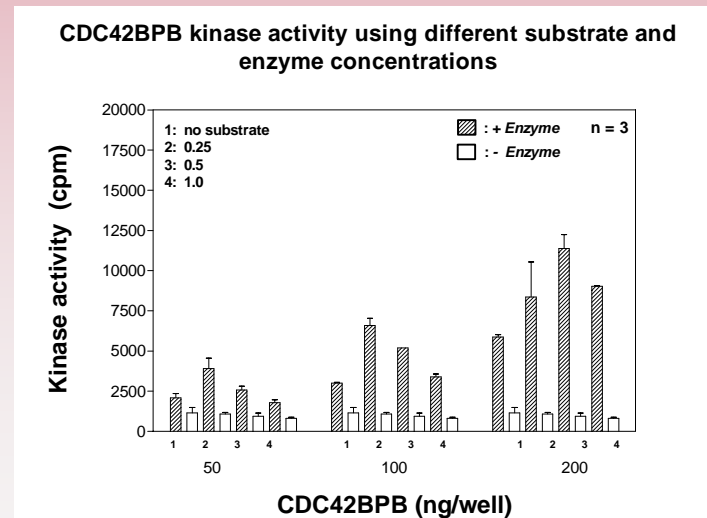
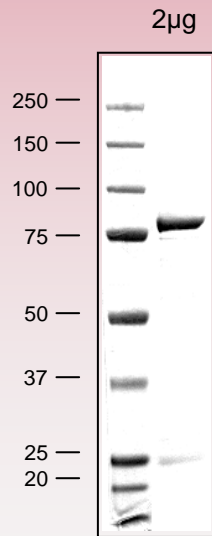
732 aminoacids, 84.445 kDa

1-218 GST
 224-229 HIS-tag
 241-246 Thrombin cleavage site
 261-732 CDC42BPB 1-472



ZF – zinc finger
 PH – Pleckstrin homology
 CRIB – Cdc42/Rac interacting binding motif

Representative lot: Coomassie stain & activity in PanQinase™ assay



Lot specific datasheet available on request.
 please contact:
info@proqinase.com